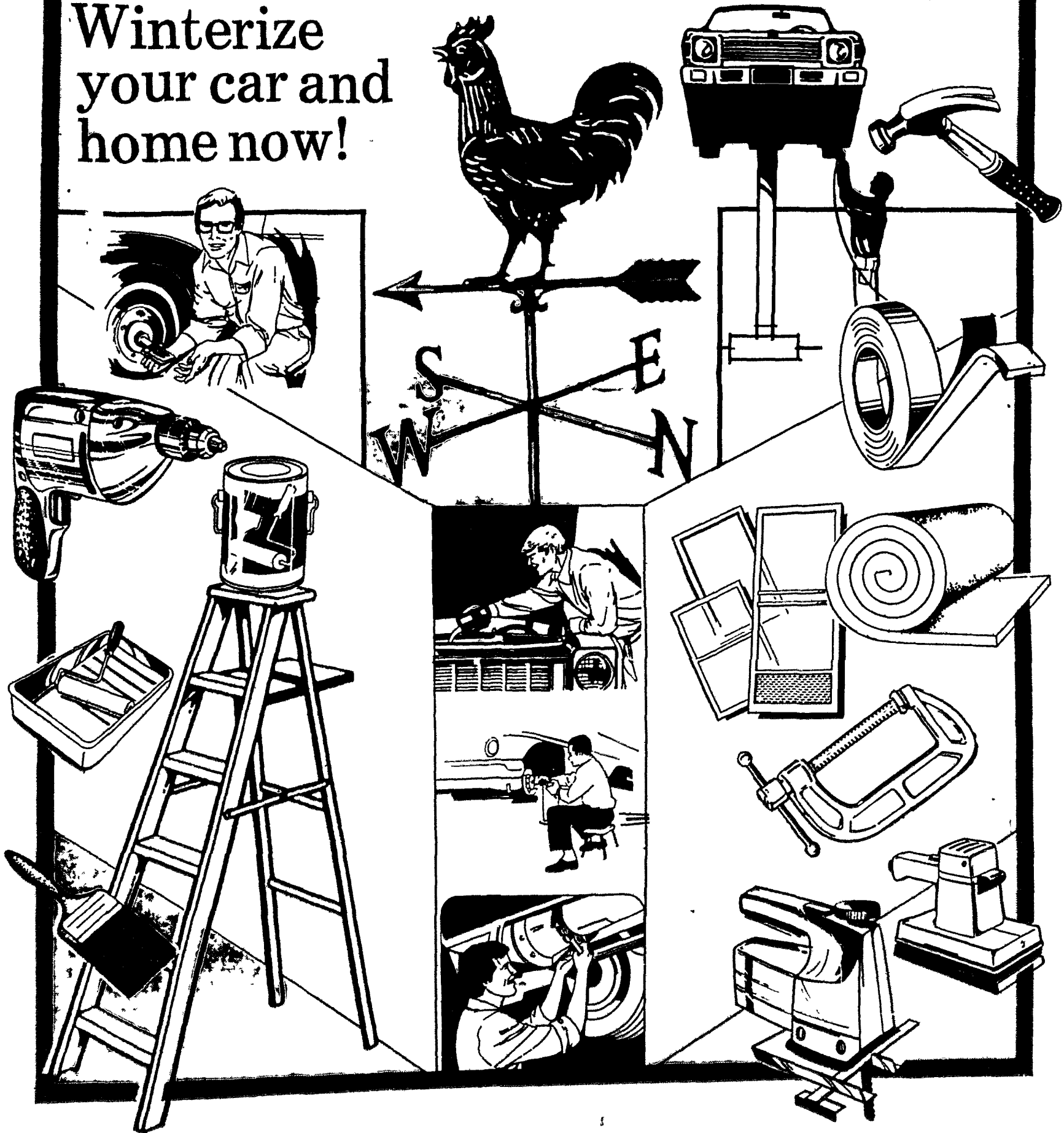


# WINTER FIX-UP 94

Supplement to the Berrien County Record

October 19, 1994

Winterize  
your car and  
home now!



# Ten Energy-Saving Ideas

Using energy wisely can reduce consumption and save money on utility bills, according to the American Gas Association. Here are some tips:

- 1 Seal leaks around doors, windows and other openings such as pipes or ducts — with caulking or weather-stripping.
- 2 Set thermostats between 65 and 70 degrees in the winter, at least 5 degrees lower when sleeping, and at 58 degrees when away from home for more than a few hours. (Warmer temperatures are recommended for homes with ill or elderly persons or infants.)
- 3 Set water heater temperatures at 140 degrees (at 120 degrees in homes with infants or elderly persons to guard against accidental scalding), and install water-flow restrictors in showerheads and faucets.
- 4 Change filters or clean the filters in heating and cooling units twice a year. Close vents and doors in unused rooms. If pipes or ducts run through unheated areas, insulate them.
- 5 Use drapes, shutters, awnings, shade trees, glass with reflective film or solar screens to keep sunlight out in the summer and let it in during the winter.

6 Check to see if attic and basement (or crawl space) have the recommended level of insulation.

7 If you have a woodburning fireplace, consider installing a natural gas fireplace insert, which can save on energy costs compared with wood. A gas fireplace also will dramatically reduce the air pollution created from burning wood.

8 Consider storm or thermal windows and doors or double paned glass. A less-expensive alternative is plastic sheeting, which can be temporarily fastened over doors and windows to retain heat or air conditioning.

9 Be sure that dishwashers, washing machines and clothes dryers are fully loaded before running.

10 When buying new appliances, compare energy efficiency ratings and annual operating costs. A slightly higher initial cost for a high-efficiency appliance could pay itself back in a very short time through energy savings and lower utility bills.

Many natural gas utilities offer assistance and special programs designed to help consumers reduce their energy bills. Contact your local gas utility for more information.

## FIRE SAFETY IN THE KITCHEN

The United States has one of the highest fire death and injury rates in the world. Fire — in the form of flames and smoke — is the second leading cause of accidental death in the home.

More than 4,000 people die each year in home fires. Every year, there are more than 500,000 residential fires serious enough to be reported to fire departments.

Use the checklist below as a safety guide to spot possible fire safety problems that may be present in your kitchen. It is a first step in reducing the risk of fire. If your answer is NO to any of these questions, the potential hazard should be corrected to avoid the risk of injury or death.

### COOKING EQUIPMENT.

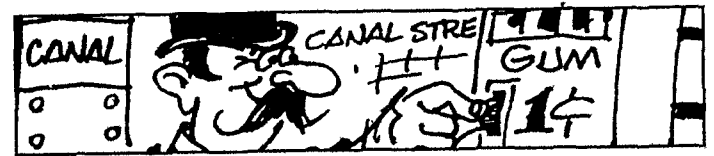
Cooking equipment is estimated to be associated with more than 100,000 fires annually, and almost 400 deaths and 5,000 injuries. Gas cooking equipment accounts for about 30,000 fires, and electric cooking equipment for about 55,000 fires.

- 1 The storage area above the stove is free of flammable and combustible items.
- 2 Short or tight-fitting sleeves and tight-fitting shirts, robes, gowns, etc., are worn while cooking.
- 3 Items that could attract children (e.g. cookies and candy) are not kept above the range and are kept out of the immediate area.
- 4 The stove is not left unattended when cooking, especially when the burner is turned to a high setting.

### RECOMMENDATIONS

- Never place or store pot holders, plastic utensils, towels and other non-cooking equipment on or near the range since these items can be ignited.
- Roll up or fasten long, loose sleeves with pins or elastic bands while cooking. Do not reach across a range while cooking. Long, loose sleeves are more likely to catch on fire than are short sleeves. Long, loose sleeves are also more apt to catch on pot handles, overturning pots and pans and cause scalds.
- Do not place candy or cookies over top of ranges. This will reduce the attraction kids may have for climbing on cooking equipment, thus reducing the possibility of their clothing catching on fire.
- Keep constant vigilance on any cooking that is required above the "keep warm" setting.

— Courtesy of the U.S. Consumer Product Safety Commission KB943924



The first vending machines in the United States were chewing gum dispensers that appeared on New York City train platforms in the late 1880s.

## Save now on superbly crafted HOMECREST cabinets!



Select your favorite finish and style from HomeCrest's full range. Choose from a group of hand-rubbed woods in oak, ash, hickory or maple with a cherry stain. Or sleek and elegant contemporary laminates.

Customize your kitchen with HomeCrest convenience options. Wine and stemware racks. Precision-balanced Lazy Susans. Special pantry cabinets with sliding trays. Designer range hoods. And many others.

You've waited long enough for the kitchen of your dreams. It's here today, more affordable than ever, with HomeCrest cabinetry.



Making your cabinets right. **HOMECREST** Cabinetry

Now thru end of Oct. take an additional 10% OFF HomeCrest Cabinetry.

**Baroda Lumber Co.**  
Where Everybody Knows Your Name

FREE ESTIMATES

422-1144

Monday thru Friday 7:30 to 5



0192 NKBA

Thursdays 'til 8pm Saturdays 8-2

# IN STOCK

1,000's of Rolls and Hundreds of Patterns

Wallpaper Unlimited now carries approximately 1,200 patterns in stock, 30,000 rolls

Discontinued Warner Fabric Backed Vinyl  
Reg. \$20.99 per single roll  
Now \$6.95 per single roll

In Stock Buy One Get One FREE Grasscloths & Textured Papers Handmade  
\$9.95

Imported John William Fire 3000  
Pre-pasted • Self-Trim  
Scrubbable • Washable  
Reg. \$10.99 per single roll  
Now \$9.95 per single roll

CLOSE-OUTS SPECIAL SELECTION  
• Pre-pasted • Vinyl coated • Strippable  
Reg. \$16.99 per single roll  
Now \$3.95 - \$4.95 - \$5.95 per single roll  
wall borders 50¢ & up

Country Prints  
OVER 800 BOOKS ALL DISCOUNTED

Pre-Pasted Vinyl Coated Country Prints  
Reg. \$17.99 per single roll  
Now \$5.95 per single roll  
wall borders \$1.95 & up

American Sports Illustrated Just Arrived  
Pre-Pasted Borders  
UNIVERSITY OF MICHIGAN

IN STOCK Waverly Patterns  
40 of the Hottest Waverly Patterns  
50% OFF  
See actual Retail

**Wallpaper Unlimited**  
927-4293 • 2457 S. M-139, Benton Harbor, MI

## — Fall Planting Tips for Beautiful Springtime Blossoms —

Traditionally considered a time for raking leaves, carving pumpkins, hay rides, and football games, autumn is also the best time for planting flowering bulbs. Planted during fall, in flower beds, rock gardens, along a hedge or fence, or in the lawn, bulbs are a great way to add a splash of color to any landscape.

Easy to plant and cultivate, bulb blossoms will thrive next spring if they are given a hospitable growing environment and are properly groomed this fall for winter dormancy. Bulbs should also be protected from foraging animals by soaking them in a repellent, such as Ro Pel Bulb Protector, prior to planting.

### Bulb Varieties

The most difficult part of planting spring-flowering bulbs is choosing from among the hundreds of species and hybrids available. Some of the most sought after varieties include:

**Tulips** — The most popular of all spring flowering bulbs, tulips offer gardeners a wide range of choices in height, color, shape and bloom time.

**Narcissus** — More commonly referred to as daffodils, this winter-hardy flower comes in many shapes and colors. These bulbs develop extensive root systems in fall and provide better flowering results in colder climates.

**Muscari** — Nicknamed the "Grape Hyacinth," these tiny, bright purple flowers multiply quickly and resemble bunches of upturned grapes. Flowers stay in bloom for one to three weeks and thrive in sun or shade. They are an excellent choice for borders.

**Chionodoxa** — Commonly known as "Glory-of-the-Snow," this spring flower blooms in loose clusters of white, blue or pink, and can vary from three to 10 inches in height. This bulb type is an ideal plant for borders and rock gardens.

### Planting Tips

Whether they are planted individually or

in groups, spring-flowering bulbs will thrive and flourish if you follow these few simple planting procedures.

**Prepare the Soil** — Once the planting bed has been selected, turn the soil over to a depth of about 10 inches to aerate the site and give bulb roots ample room to grow. Quick to rot if left in standing water, spring-flowering bulbs flourish best in light, well-drained soil. Where necessary, condition soil with fertilizer as required.

**Plant at Proper Depth** — Using a bulb planter or trowel to dig holes, the general rule of thumb is to plant bulbs to a depth of three times their overall height. With the soil removed to the required depth, lightly press bulbs into place bottom side down (the flat side is the bottom), return the soil, and water thoroughly.

Remember, if bulbs are planted too shallow the freezing and thawing of surrounding soil may interrupt their dormant phase, permanently damaging root systems and limiting your chance of bright, healthy blossoms.

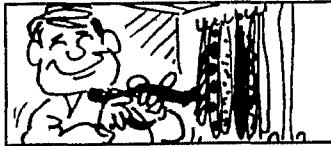
**Protect Against Pests** — Bulbs are a tasty treat for many hungry creatures, such as mice, moles, squirrels and chipmunks. To keep these animals from making a restaurant out of your garden, soak each bulb for a minute, prior to planting, in Ro Pel Bulb Protector, a safe and effective animal repellent that works on the principle of aversive taste. Non-hazardous and ecologically-sound, Ro-Pel will give any bulb-feasting creature a "bitter" reminder that this property is off limits.

To ensure that hungry animals don't return to feed, Ro-pel is also formulated with a mild medicinal tag scent. After one or two visits to your garden, animals quickly associate the odor with the subsequent vile taste in their mouth. As a result, raccoons, chipmunks, squirrels and other animals can be literally "trained" to leave your garden alone and move on to someone else's garden.

After bulbs have grown and flowered, spray the blossoms with Ro-Pel again to deter animals such as deer and rabbits from chewing on flowers and other foliage.

**Groom With Caution** — If you already have blossoms, the best way to ensure that bulbs flower again next year is to "deadhead" (remove the dying blossom) from the wilting plant at season's end, but allow foliage to wither without immediate pruning. This is crucial as stems and leaves continue to create and store food for winter dormancy and eventual use next spring.

Once in place, most bulb gardens can be left to multiply and flourish. With a little time and effort this fall, flowering bulbs will provide colorful, bright blossoms next spring and year-round.



To make the most of your closet space, hang tie and shoe racks on the back of the closet doors.



HOME & GARDEN FEATURES

**BULBS, GLORIOUS BULBS** — Tulips and other spring-flowering bulbs give the landscape a touch of royal splendor. To protect colorful blossoms from hungry animals, spray them with Ro-Pel Bulb Protector.

# MOWING, TRIMMING, FILLING, TILLING.

## ?

### 925-2125

**RENT AND SAVE.**  
The Taylor Rental way. Just call to reserve the tools and equipment you need. And you'll do the job like a professional with the same tools and equipment they use.

Flexible rental periods. Top-condition products. Even delivery on large items. It's all right at Taylor Rental.

**YOU'LL FIND IT RIGHT AT TAYLOR RENTAL**  
We're more than just products at work.™  
LTRC Corp. At participating sites.

NBD gives you something other banks may not.

## Credit.

The NBD Community Pride Home Improvement Loan

At NBD non-traditional credit references like utility and insurance payments or rent history may help you get a \$500 to \$5,000 home improvement loan. So, if you're a homeowner looking for credit, call or visit any NBD branch.

The right bank can make a difference.

### Your Home Improvement Specialist

<p><b>Floor Care</b></p> <ul style="list-style-type: none"> <li>Carpet Cleaners</li> <li>Carpet Kickers</li> <li>Carpet Polishers</li> </ul>	<ul style="list-style-type: none"> <li>Carpet Scrubbers</li> <li>Floor Nailers</li> <li>Floor Edgers</li> </ul>	<ul style="list-style-type: none"> <li>Floor Sanders</li> <li>Floor Scrubbers</li> <li>Tackers, Elec</li> </ul>	<ul style="list-style-type: none"> <li>Tile Rollers</li> <li>Tile Strippers</li> <li>Vacuums Wet/Dry</li> </ul>
<ul style="list-style-type: none"> <li>Aerators</li> <li>Brush Cutters</li> <li>Chain Saws</li> <li>Fertilizer Spreaders</li> <li>Hedge Trimmers</li> </ul>	<ul style="list-style-type: none"> <li>Lawn Edgers</li> <li>Vacuums</li> <li>Rollers</li> <li>Log Splitters</li> <li>Leaf Blowers</li> </ul>	<p><b>Lawn &amp; Garden</b></p> <ul style="list-style-type: none"> <li>Mowers, Reg</li> <li>Mowers, High Whl</li> <li>Mowers, Weed</li> <li>Sod Cutters</li> <li>Post Hole Diggers</li> </ul>	<ul style="list-style-type: none"> <li>Stump Grinders</li> <li>Thatchers</li> <li>Tillers</li> <li>Tree Pruners</li> <li>Wheelbarrows</li> </ul>
<ul style="list-style-type: none"> <li>Airless Sprayers</li> <li>Compressors, Air</li> </ul>	<ul style="list-style-type: none"> <li>Dry Wall Lifts</li> <li>Dry Wall tools</li> </ul>	<p><b>Painting &amp; Wallpapering</b></p> <ul style="list-style-type: none"> <li>Ladders</li> <li>Scaffolding</li> </ul>	<ul style="list-style-type: none"> <li>Textured Sprayers</li> <li>Wall Paper Steamers</li> </ul>
<ul style="list-style-type: none"> <li>Conduit Benders</li> <li>Drain Augers</li> </ul>	<ul style="list-style-type: none"> <li>Pipe Cutters</li> <li>Pipe Threaders</li> </ul>	<p><b>Plumbing</b></p> <ul style="list-style-type: none"> <li>Pwr Sewer Snakes</li> <li>Submersible Pumps</li> </ul>	<ul style="list-style-type: none"> <li>Tubing Cutters</li> <li>Waterbed Pumps</li> </ul>
<ul style="list-style-type: none"> <li>Air Nailers</li> <li>Ceramic Tile Saws</li> <li>Core Drills</li> <li>Demo Hammers</li> </ul>	<ul style="list-style-type: none"> <li>Drills, 1/2" Elec</li> <li>Drills, Cordless</li> <li>Drills, Dry Wall</li> <li>Drills, 3/8" Elec</li> </ul>	<p><b>Power Tools</b></p> <ul style="list-style-type: none"> <li>Generators</li> <li>Grinders</li> <li>Nails</li> <li>Vacuum Lift Cups</li> </ul>	<ul style="list-style-type: none"> <li>Rotary Hammers</li> <li>Sanders &amp; Sawzalls</li> <li>Stud Guns</li> </ul>
<ul style="list-style-type: none"> <li>Airless Sprayers</li> <li>Bobcat</li> <li>Brck Saw, Gas</li> <li>Cement Imprinters</li> <li>Cement Mixer</li> </ul>	<ul style="list-style-type: none"> <li>Compressors</li> <li>Equipment Lifts</li> <li>Man Lifts, 23' / 42'</li> <li>Mortar Mixers</li> <li>Pressure Washers</li> </ul>	<ul style="list-style-type: none"> <li>Roof Stapler</li> <li>Scaffolding</li> <li>Sweeper, Gas</li> <li>(Parking Lot)</li> <li>Transits</li> </ul>	<ul style="list-style-type: none"> <li>Trenchers</li> <li>Water Pumps</li> <li>Welders</li> <li>Wheel Barrows</li> </ul>

**Contractors & Professionals**

**TAYLOR RENTAL**  
We're more than just products at work.

2524 S M-139, Benton Harbor, MI  
(at exit 28 off I-94) PHONE: 925-2125  
Monday-Friday 7:30-5:30, Sat. 8:00-5:00

We Fill Propane

**1-800-880-4999**

## Free 1995 New Child Safety Booklet for Your Home's Improvement

Want to help your kids avoid an unnecessary severe, possibly fatal accident this fall? KinderGard, a 20-year-old company specializing in child protection, has published a "new" guide for home safety, called *Safechild*, for new parents and grandparents. It recommends they get down on all fours to actually see what dangers lurk in their little ones' worlds at eye level, the way they see it.

When your baby begins pulling up, crawling or toddling, for peace of mind, parents and grandparents should consider the following to accident-proof their homes:

- Kitchen — Installing cabinet and drawer latches helps prevent unnecessary poisoning.

- Bedroom — To prevent electrical shocks or burns, electrical outlet covers and plugs should be installed where necessary.

- Bathroom — Install a thick, spongy bathtub spout cover to help prevent head injuries and a liquid crystal thermometer is a must to measure water temperature easily.

"KinderGard's child protection products are superior-design, premium-quality, USA-made products produced from engineering-grade thermoplastics. They last longer than inferior, flimsy, toy-grade Asian plastics," says KinderGard's marketing manager. "That's why they work better. Then, your home can be a place for your youngsters to play, explore and dis-

cover safely."

Free for the asking, KinderGard's *Safechild* booklet is available for September, National Baby Safety Month, or for fall home improvement from your neighborhood hardware and baby furniture stores. Or send a stamped, self-addressed envelope to KinderGard, Dept. MM9, 2154A Chennault, Carrollton, Texas 75006-5022.



HOME IMPROVEMENTS begin with accident-proofing your home.



### FALL SPECIAL

NOW THRU 10/31/93



**Battery Sale**

**800 AMP 72 MONTH**  
**GM FORD CHRYSLER**  
**550 AMP 60 MONTH**  
**TOP POST & SIDE POST**  
**60 MONTH** starting at **\$49<sup>95</sup>**

**FARMERS - GROUP 1.6 VOLT, 2 YR WARRANTY 400 AMP** **\$36<sup>50</sup>**



**NYE'S SHELL SERVICE**  
 First Street, Baroda - 422-1674  
 Daily 8 am-6 pm; Sat 8 am-11 am; Closed Sunday

**McCULLOCH**



### Tired of all that strain raking up leaves every year?

Make this year different!!  
 Get ready for leaf clean-up this year with a Titan Professional Gas Blower

**Features:**

- 25cc Gas Engine
- 425 CFM Air Volume at 155 MPH Air Velocity
- Hard Chrome Plated Cylinder
- All Position Carburetor
- Shoulder Strap and Control Handle
- 3-Position Throttle Lock



**TITAN**

Mulches as it Vacuums with Optional Vacuum Kit (P/N 301480) Includes:

- support harness
- 1 75 bushel vacuum bag made of durable nylon for easy conversion to vacuum
- 2 High impact vacuum tubes

**\$119.95**

**\$129.95 w/ vacuum**

Also!! Check out our McCulloch Chain Saws starting at \$129.95

**Bakertown Lumber & Building Supply**

16689 Bakertown Road, Buchanan  
 616-695-2342 • 800-774-5111



**3 YEAR WARRANTY**





# A GOOD SIGN FOR BANKING IN YOUR COMMUNITY.

Serving the financial needs of businesses and individuals with  
 A complete range of products • Convenient locations • Outstanding service

Just look for our sign -- and stop in!



OLD KENT BANK 1992

# When Should You Wash Your Car?

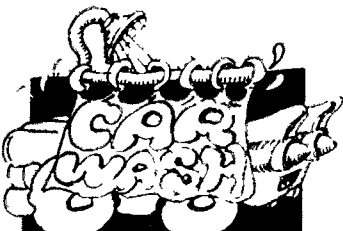
From the time when an automobile is first transported to the dealer, metallic railroad dust, road grime, tar oil, bugs, salt, acid rain and countless other elements all take their toll on a car's delicate finish.

We usually think of washing the car only in the winter to prevent corrosion caused by winter salt, but did you know that immediately after a rainfall is one of the most critical times to wash your car? That's right, even the lightest shower could cause irreparable acid rain damage to your vehicle's beautiful finish, if not quickly cleaned at a professional car wash.

"Acid rain damage is caused when high concentrations of emissions from fossil-fuel-burning engines or plants react with your car's paint to form sulfuric and nitric acids," says Dan Palenske, president of the International Carwash Association (ICA). He adds, "The result of this process is the penetration and etching of clear-coat finishes, whose protective qualities will then eventually corrode, exposing the paint to many harmful, corrosive elements. A car with bad acid rain damage could be devalued by up to \$1,000 at trade-in or resale time."

Although you can't prevent acid rain, you can keep it from ruining your car's finish by removing it as soon as possible at a professional car wash, advises Palenske.

New cars are treated with what's



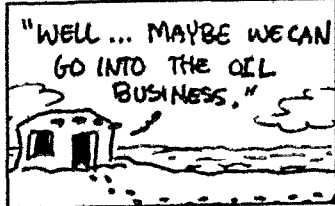
known as a "clear-coat finish," which is nothing more than a layer of paint without color pigment. Palenske likens this to sunscreens that protect our skin from the sun's damaging rays. Just like removing sunscreen exposes your skin to the sun's harmful rays, if the clear-coat finish is damaged by acid rain, it can no longer protect the car's painted finish.

This is why it's important to visit a professional car wash frequently, and especially after a rainfall. Keeping your car's finish in the best possible condition is of vital importance in maintaining and preserving the overall appearance and value of the car.

A broken engine part — even the entire engine — can be replaced, but once the body is destroyed, the car is worthless.

For more information on car care, consult with the manager of your local professional car wash, or contact ICA at 312-644-6610.

FC944761



Historians say the first cities appeared around 3,500 B.C. in what is now Iraq.

# Regular Brake Inspections Are Good Maintenance Habits

Typical drivers will travel approximately 70 feet during an emergency stop, from 65 miles per hour, before their feet reach the brake pedal. With poor eyesight, bad lights or streaking windshield wipers, or if under the effects of alcohol or medicine, their reaction times will be even slower.

Hitting the brake pedal can be just the beginning of their problems if they've failed to keep up regular mechanical maintenance. Erratic braking can cause a bad emergency situation to become worse, it can pull cars right into the middle of an accident or it may not stop the car

at all. Despite recent advancements in braking system design, including anti-lock brakes, this safety system is among the most neglected on vehicles and a leading mechanical cause of accidents.

A car's braking system is a complex system of parts. A malfunction of any part can cause brakes to be erratic or fail.

The events that happen when pressure is applied to the brake pedal are:

- The pressure against the pedal is transferred to the hydraulic mas-

ter cylinder, where pressurized fluid is fed to hydraulic cylinders at the four wheels.

On disc brakes, the caliper causes friction pads to squeeze the spinning rotor, slowing or stopping the wheel.

On rear-wheel drum brakes, a wheel cylinder receives the pressure and forces the brake shoes against the rotating drums.

Some vehicles have disc brakes or drum brakes on all four wheels, most have a combination of disc on front and drum on rear. Friction stops the vehicle. Motion energy is converted to heat which is dissi-

pated by air cooling the rotors and drums.

This complex system can deteriorate easily. Not only is there friction and heat, but the system is exposed to the elements and road contamination every day. Therefore, regular inspections and service are necessary.

Don't take braking problems for granted. If a vehicle isn't stopping as quickly or as well as it used to, have the brakes inspected. Not only will this procedure protect your car, but yourself as well.

FC944839



## Sparkle Car Care Center

2080 S. M-139, Benton Harbor, MI

### NOISE CONTROL

BEST PRICE, QUALITY & SERVICE, GUARANTEED!

## PRO MUFFLER & BRAKE SHOPS

THIRD ST. at Broadway,  
NILES, MI  
2 blocks So of Main  
**684-4540**

Senior Citizen Discounts

TWO CONVENIENT  
LOCATIONS:  
FREE Estimates  
FAST QUALITY SERVICE  
GUARANTEED PRODUCTS  
CLEAN FRIENDLY ATMOSPHERE

2094 S. M-139  
BENTON HARBOR, MI  
(In the Sparkle Car Care Center)  
**926-2006**

Senior Citizen Discounts

CUSTOM PIPE BENDING



## Rust Proofing

As Low As **\$140<sup>00</sup>**

With purchase of Paint Sealant and Fabric Protection at Reg. Price.

Expires Oct 31 1994

## DON'T LET SALT EAT YOUR CAR!

Protect it and save \$30.00 on  
UNDERCOATING **Only \$95**

- Seals out moisture, salt and contaminants
- Quiets ride, Improve passenger comfort
- Won't void car maker's warranty\*
- Trucks slightly higher

### \$110.00 OFF

#### WINTER PROTECTION PACKAGE

- Rust Protection • Paint Protection
- Protection from corrosion, fading & staining
- Does not void car maker's warranty
- Warranted

Only **\$310**

### NEVER WAX AGAIN

#### PAINT PROTECTION

- Tough acrylic with Teflon™
- Eliminates fading
- Maintains showroom shine
- Protects finish from salt & grime
- Warranted

Only **\$130**



2080 S. M-139  
Benton Harbor, MI  
**925-6611**



Behind Sparkle Car Wash  
Offer expires 10/31/94 \* See dealer for details



AREA'S MOST COMPLETE FULL SERVICE & SELF SERVICE CAR WASH!

# A SPARKLING FINISH

for your car's spring cleaning

FREE Car Wash with an oil change!

**\$2.00 OFF**

NEW! Triple Coat  
**ULTRA SHINE CLEAR COAT**

Triple The Shine!  
Triple The Protection!  
Expires Nov 30 1994



TWO LOCATIONS!  
2080 S. M-139  
Benton Harbor  
925-6103  
Corner of Hilltop & Washington,  
St Joseph  
**CAR WASH**

**\$3.00 OFF**

**SPARKLE QUICK LUBE Oil Change**

With purchase of Triple Coat Clear Coat  
696 M 139 Benton Harbor  
103 Washington St. St. Joseph  
No Appointment Necessary  
Expires Nov 30 1994



## Secret Revealed for Getting Autumn's Really Dirty Hands Clean

Fall bids farewell to summer with a beautiful burst of color. But that beautiful burst of color quickly becomes an imposing pile of leaves to be raked. But it doesn't stop there. Some painting needs to be done. Perhaps some fertilizing. Checking the antifreeze in the car. Removing those room air conditioners and making sure the storm windows are in place before the freezing winds of winter.

These are difficult jobs that can leave you exhausted and also leave your hands dirtier than you can imagine. While no one has yet discovered a way to reduce the tough jobs that come with autumn, homeowners are discovering something that will revitalize those dirty hands and leave protective moisturizers to guard against an unfriendly climate. The discovery they are making is Permatex Fast Orange® hand cleaner.

Long a favorite among mechanics and other professionals whose work gets their hands dirty with ground-in grease, Fast Orange hand cleaner is quickly being adopted by homeowners and do-it-yourselfers for fall cleanup and other dirt-attracting tasks. Users of this powerful hand cleaner appreciate its ability to remove the most stubborn dirt. The "secret" of Fast Orange is that it contains a citrus-based natural solvent extracted from oranges, which also makes it environmentally friendly. And users — both women and men — love the way their hands feel once they've used Fast Orange. Unlike most extra-strength hand cleaners, Fast Orange contains no drying petroleum.

In fact, Fast Orange is loaded with the most popular and effective moisturizers — including aloe, lanolin, vitamin E and jojoba oil. The theory behind Fast Orange is that clean hands should also be comfortable hands, protected from the cracking and drying associated with petroleum-based hand cleaners.

Available in both lotion and cream formulas, Fast Orange comes in two versions: smooth and pumice (for the dirtiest hands). While shop professionals enjoy the economy of the half-gallon pump dispensers, most home users find the 7½ ounce or 15-ounce bottle ideal for their use.

Fast Orange is sold in automotive supply stores as well as at local hardware outlets.



FALL CLEANUP MEANS difficult jobs and dirty hands, but homeowners and do-it-yourselfers are quickly adopting Fast Orange — a citrus-based hand cleaner — to remove the most stubborn dirt and grease. FH944218

**FIX IT  
THIS  
FALL**



**Caulking  
Weather stripping  
HEAVY DUTY Plastic  
Carpet Cleaners  
For Rent**



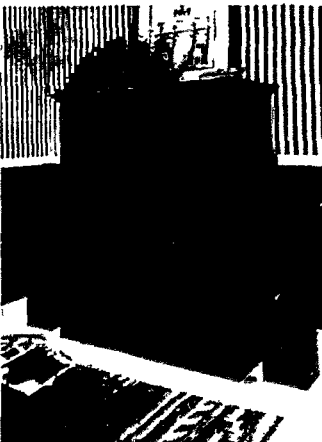
**Personal Pride Paints & Stains**

**Coast to Coast.**

**HARDWARE**

465-3782
4246 Lake St., Bridgman

### Space-saving Designs



For rooms where space is a consideration, Custom Woodwork & Designs offers a solution. The company's Woodstock II Home Theater cabinet will accommodate your TV and components in just 4 feet or less. Call 800-323-2159, ext. NPR. FH944360

## IMPERIAL FURNITURE

*"Quality furniture" Since 1962*

**"Buy fine furniture off cement floors,"  
and SAVE at SALE prices everyday!!**

• Berne	• Virginia House
• Tell City	• S Bent
• La-Z-Boy	• Rowe
• Cochrane	• Hooker
• Bassett	• Action by Lane
• Riverside	• Stanley
• Pulaski	• Chromcraft
• Smith Brothers of Berne	• Berkline
• Towne Square	• Lexington
	• Peters Revington
	• Plus More

**Including Accessories**

Free Delivery and Pick-Up  
Free White Glove Service

## IMPERIAL FURNITURE

2 miles South of Dowagiac  
on M 51  
782-5020  
1-800-884-5020  
Mon-Fri 9-6 Sat 9-5  
Wed 11-8pm



## Heat Pumps: a Versatile Heating/Cooling Solution for the Home

When replacing that tired furnace or central air conditioner, homeowners should consider the versatile and energy-saving qualities of a heat pump, according to the Air-Conditioning and Refrigeration Institute.

Heat pumps replace both the furnace and central air conditioner, providing winter heating and summer cooling. In winter, the heat pump collects heat from outdoor air to warm the air inside your home. In summer, the process is reversed so that the heat pump collects heat from the air in your home and expels it outside.

Because the heat pump collects heat that already exists in the outdoor air, it can supply from two to three times more heat than the energy it uses, depending on the efficiency of the heat pump and the outside temperature. For example, a heat pump can save 30 percent to 60 percent on electric heating bills because it uses 30 percent to 60 percent less energy to supply the same heat as an electric furnace with a resistance heating element.

For more information on how to save energy and money with heat pumps, send for ARI's free pamphlet, *Heat, Cool, Save Energy with a Heat Pump*. Send a stamped, self-addressed business envelope to ARI Department, 94/U9, 4301 N Fairfax Drive, Suite 425, Arlington, VA 22203. No phone orders are accepted. FH944247

Available in Berrien County, Michigan, Wisconsin, and Illinois

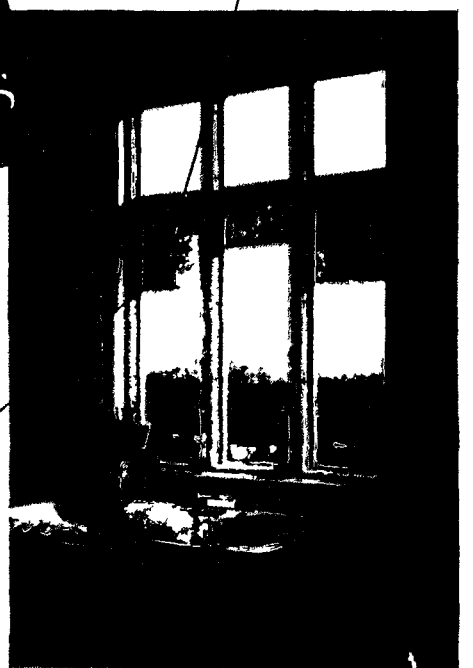
## Pella® pleated shades. Color and beauty under glass.

*Pella® pleated shades fit between the panes of glass on our Designer Series™ windows and doors, away from dust and damage*

**5 New Colors**

- Jasmine Hammered Silk
- Magnolia Hammered Silk
- Raspberry
- Wedgewood
- Spruce

*When you're ready to change your decor, you can just as easily change your pleated shades*



As practical as they are stylish, Pella® pleated shades are now available in more colors and fabrics than ever before, including several special colors with an energy-efficient backing. See for yourself — visit your Pella Window Store® today.

**Quality like this only comes from Pella.**

- |                                                                |                                                                    |
|----------------------------------------------------------------|--------------------------------------------------------------------|
| <b>South Bend - North</b><br>1421 N Ironwood Dr<br>Ph 271 5600 | <b>South Bend - South</b><br>2310 S Main St<br>Ph 287 2901         |
| <b>Michigan City</b><br>2020 E U S Hwy 20<br>Ph 872 6827       | <b>Elkhart/Gooben</b><br>2004 Elkhart Rd. (U.S. 33)<br>Ph 531 3630 |



## Cold Weather Can Be Tough on Roads — and Cars

As winter approaches, people are preparing for the alternating freezing and thawing they'll face as cold weather battles the warm temperatures for control. This fight can be brutal, and it can even leave scars — potholes — on the road before the really cold weather even sets in. These obstacles make driving in slush and snow more challenging than it already is.

Dodging potholes isn't always possible. So, after driving through a deep pothole, one can only hope that he hasn't damaged a tire or broken a spring. Sometimes, a driver may even break a bracket that secures the muffler and pipe to the frame, and may end up digging his tailpipe behind him along the street.

Strong shock absorbers and struts can help keep people from losing control when driving through potholes. However, bumpy rides cause these parts to wear, and they gradually lose their ability to keep the car stable.

Worn shocks and struts are unsafe and can increase the wear of other car parts, including tires, ball joints, steering linkage, springs and c.v. joints.

Signs that the potholes have affected shocks and struts include when:

- the vehicle rolls and/or sways on turns,

- the front end dives when applying the brakes
- the rear end "squats" when accelerating,



**TOUGHEN UP** against cold weather. After a season of dodging potholes, check to see what damage has been done to cars by taking them in for under-car inspections.

- the vehicle bounces or slides when on a winding, rough road,
  - the vehicle bottoms out
- To discover if potholes have damaged their cars, people should take them in for under-car inspections. When checking cars, experts know to look for leaks, dents on struts or shock bodies, worn bushings, abnormally

worn tires and damaged or missing compression bumpers. To see how bad the damage is, alignment checks may be needed.

Potholes can wreak havoc on cars — and people's nerves. So, stop worrying about what damage might have occurred, and take your car to a professional to be checked. FC944838

## Dial a Style

What's your style? Leaders in kitchen design have defined three distinct looks, based on the most popular lifestyle choices today. Once you've identified your style, a broad range of beautifully designed, coordinated products is illustrated in a free portfolio that is just a phone call away. The portfolio is a key element in a program called "Dwelling Patterns," sponsored by industry leaders Armstrong Flooring, Heritage cabinets, Waverly fabrics and wallcoverings, and Wilsonart countertops.

These surface materials comprise 90 percent of the impact of most kitchens, according to experts. By coordinating the surface materials into the "Dwelling Patterns" easy-to-use groups, the whole room's design effortlessly comes together.

The three lifestyle themes, "The Farm," "The Lake," and "The Manor," are not to be taken literally, but are more reflective of the way people would like to live in their spaces. Each is interpreted in pale, bright or rich colorations. If your lifestyle includes plants, animals, gardening, wholesome food and kitchen/family room entertaining, "The Farm" is likely to suit you best, if loafing, relaxing, escaping outdoors, hamburgers on the grill and dinner on the porch suit you, opt for "The Lake" style, if frequent gracious entertaining, carefully designed details, tradition and a degree of formality please you, go directly to "The Manor."

Call 1-800-313-5556 to order a free portfolio based on your lifestyle selection. It includes color illustrations and a handy mix-match coordinated chart that tells exactly which products go with the others for floors, walls, cabinets and countertops. Also provided are directions for identifying nearby retailers who carry the products for easy shopping. Broad enough to provide flexibility, each collection has been artfully edited to take the guesswork out of great design.

About 950 cities in the United States have a mass transit system. Almost all provide bus service only.

**Richard's Upholstery & Furniture Gallery**  
 17 YEARS EXPERIENCE

- Antiques (including gluing)
- Automobile seats
- Boat seats and marine upholstery
- Repairs • wide selection of fabrics

Richard Scull owner

**695-2534** • FREE ESTIMATES • FREE PICK UP & DELIVERY

107 Front Street Buchanan, MI 49107

**NATIONAL UNFINISHED FURNITURE MONTH**

October is National Unfinished Furniture Month. Visit Simply Wood for furnishings that will beautify any room in your home.

Quality "Ready to Finish" Furniture  
 Made From Solid Wood

Yield House

Stop in for your FREE Yield House Christmas Catalog

**SIMPLY WOOD FURNITURE**

7040 Red Arrow Hwy, Coloma  
 Between Watervliet and Coloma

Hours: Mon-Fri 10-6 • Sat 10-5  
 Closed Sunday

**THE D-STORE COMPLETE AUTOMOTIVE**

Poor Car Maintenance Robbing You Of Your Hard-Earned Money? Call Today And Take Advantage Of Our Oct. SERVICE SPECIALS. Cooler Weather Means Time To Get Ready For Winter With....

**683-2336 • 683-5045**

919 Michigan Niles, MI 49120

**THE D-STORE**  
 COMPLETE AUTOMOTIVE REPAIR & TOWING  
 Owner: Dennis Wilson Call Ahead For Appointment

**COUPON**

**FALL CAR CARE SPECIAL**

- Basic Tune-Up
- Lube, Oil, Filter
- All Fluids Topped
- Tires Rotated
- And a Bumper to Bumper Check of All Major Systems
- 4 Wheel Computerized Alignment
- Radiator Flush & Fill
- Check Battery, Alternator, Starter

**\$9895** 4 Cylinder Car

Offer good now through Oct. 30, 1994

**COUPON**

**THE D-STORE COMPLETE AUTOMOTIVE**

# The Right Way To Care For Your Resilient Flooring

Many of you out there have been paying too much attention to the quaint, yet apparently persistent custom of cleaning vinyl flooring, also known as resilient flooring, with vinegar and water.

"Using vinegar and water to clean your vinyl flooring ranks right up there with putting butter on burns," says Brian Quigley, Director of Consumer Affairs at Congoleum Corp., a leading manufacturer of sheet vinyl and vinyl tile flooring. "This homemade cleaning solution is all right for other areas such as windows, but it really isn't the effective way to clean a floor that receives high foot traffic on a day-to-day basis."

So save the vinegar for your salad! The following tips from Congoleum will help you keep your vinyl floor looking bright, shiny and new.

- Sweeping or vacuuming your vinyl floor on a regular basis will serve to remove loose dirt, abrasive sand and grit.
- Wash your floor on a regular basis using a manufacturer-approved, non-abrasive no-rinse cleaner for best results. Cleaners that contain abrasives or solvents may permanently damage the floor and are not recommended.
- High-gloss, urethane floors benefit from the application of a polish. Using a manufacturer-approved floor polish as part of a regular maintenance program will help protect against surface abrasions that can dull the floor's appearance.
- To remedy dulling in high traffic areas -- e.g. near the stove, sink, or re-

frigerator, and under chair legs -- deep clean the abraded areas with a manufacturer-recommended floor polish remover. After the floor has

been rinsed and allowed to dry, an application of two or more thin coats of floor polish will protect the floor and restore the luster.

One step "mop and polish" products, dishwashing liquids and oil-based cleaners are not recommended, as these may leave a residue that can attract dirt and dull the floor.

If you follow these cleaning methods, you'll be rewarded with a great-

looking vinyl floor that helps the rest of your home to look brighter and newer.

If you have any questions about cleaning or maintenance of vinyl flooring, or would like a free trial packet of Congoleum's Bright'n Easy No-Rinse Floor Cleaner, please write: Congoleum Corporation, Consumer Affairs Department, 3705 Quakerbridge Road, Mercerville, NJ 08619.



## THE FLOOR STORE

The leaves are falling... and so are prices!!!

- o Custom Rugs
- o Berbers
- o Commercials
- o Sculptures
- o Florals
- o Tartan Plaids
- o Binding
- o Saxonies
- o Vinyl Flooring
- o Southwest Designs
- o Graphics
- o Plushes and more!!!

90 Days Same as Cash Available!!!

Larry Hawks - Owner & Installer  
Mon-Sat 9-5, after hours by appointment  
701 S Red Bud Trail, Buchanan  
695-1400

### Natural Gas Costs Less Energy Department Says

Natural gas can save consumers money on utility bills according to energy price projections released by the U.S. Department of Energy (DOE).

DOE statistics show that residential natural gas prices in 1994 will be lower than electricity and heating oil on a national average basis.

DOE estimates that the 1994 residential price of natural gas will be \$6.04 per million Btu (MMBtu), compared with \$24.65 per MMBtu for electricity and \$7.60 per MMBtu for heating oil.

"This means it will cost consumers less to heat their homes, heat water, cook and dry clothes -- if they use natural gas appliances," American Gas Association President Michael Baly says.

"Consumer prices for natural gas have been very stable for the last 10 years, because the nation has an ample supply of natural gas and because of the development of new technologies in the search for gas," Baly says.

"In addition, natural gas is an American energy with about 99 percent of the natural gas the nation uses coming from North America," Baly says.

# CARTER

- PLUMBING
- ELECTRIC
- HEATING
- SERVICE
- SELECTION
- QUALITY MERCHANDISE
- GUARANTEED SATISFACTION

### Heating

**KEASCO FORCED AIR WALL HEATER**  
#2435P 1500 watts  
**56<sup>00</sup>**

WALL STACK REGISTER BOOTS & FITTINGS TRUNK DUCT

**CARTER** offers a complete line of DUCTWORK & FITTINGS

Hamilton GAS FURNACE

- \*Electric ignition \*Air conditioner ready \*Uplow \*LP Gas extra
- #WUH060-3 60,000 B T U **569<sup>00</sup>**
- #WUH080-3 75,000 B T U **589<sup>00</sup>**
- #WUH100-3 95,000 B T U **629<sup>00</sup>**

**KEASCO BASEBOARD HEATER**  
\*250 watt per ft \*Available in 2, 10 ft lengths

2'	22.99	5'	34.99
3'	27.99	8'	39.99
4'	30.99	10'	62.99

DUCT PIPE & FITTINGS

6" elbow	6" x 24" pipe	Register boot
<b>139</b>	<b>219</b>	<b>399</b>
30 Ga	30 Ga	

**PLUG-IN POWER HUMIDIFIER**  
\*Humidifies homes up to 2000 sq ft \*For use on all forced air furnaces & heat pumps (#2D)  
**71<sup>95</sup>**

**1994 Consumer Energy Cost per Million Btu**

Natural Gas	\$6.04
Heating Oil	\$7.60
Electricity	\$24.65

Source: Dept. of Energy

APPLY TODAY FOR YOUR CARTER CREDIT CARD

# CARTER LUMBER

8213 RED ARROW HIGHWAY, BRIDGMAN, MI  
2-1/2 MILES NORTH ON RED ARROW OFF I-94 • LUMBER 465-6600  
Mon.-Fri. 7:30-6, Sat. 7:30-4, Sun. 9-3

VISA MasterCard DELIVERY AVAILABLE CARTER 1994

# Beat the Cold, or Heat, With Insulation

As many homeowners know, aside from the mortgage payment, home energy bills are the highest household expense. In fact, according to Department of Energy (DOE) estimates for 1993, typical homeowners can expect to spend \$1,280 on their annual home energy bills.

So, if last winter's heating bills or this summer's cooling bills left you reeling, you may want to consider adding insulation to your home now. Installing fiber glass blanket insulation in key areas of the home is an easy and inexpensive way to decrease energy bills and increase comfort.

"Important areas to insulate include attics, basement walls, crawlspace walls and under floors," says Tom Seymour, Owens-Corning vice president. "You can further reduce home energy loss by insulating ducts, pipes and water heaters. Insulation can also enhance sound control and increase a home's resale value."

Although the benefits of adding insulation to the home are, for the most part, common knowledge, some homeowners are still hesitant to take on an insulation task because they assume it is difficult or messy. To inspire these individuals, Owens-Corning has made insulating jobs a touch easier with its PINKPLUS™ R-25 and R-13 products.

Both products are made of Owens-Corning's PINK Fiberglas® insulation encased in pink polyethylene, making them more comfortable to touch, less likely to itch and irritate, and easy to handle and install. PINKPLUS 7/8-inch-thick R-25 insulation is perfect for attics with existing insulation as well as crawlspace walls and floors above ventilated crawlspaces. And for the remodeler, Owens-Corning offers PINKPLUS 3/8-inch-thick R-13, an insulation designed specifically for 2-by-4 wall installation.

"Since most homes already have some insulation in the attic, adding PINKPLUS R-25 is an easy way to meet the DOE R-value recommendations and get the most out of your energy dollars year-round," Seymour says. "For most U.S. homes, the DOE recommends R-38, equivalent to 12 inches of fiber glass blanket insulation."

Seymour offers the following tips for upgrading an attic's efficiency:

- Basic Tools and Materials Needed:**
- tape measure
  - utility knife
  - straight edge
  - portable work light
  - boards or sheets of plywood (to provide a safe place to sit or kneel in an attic and a surface on which to cut the insulation)
  - a pole or rake (for pushing blankets into out-of-the-way places in attics)

**STEP 1:** Before visiting a building material retailer, measure the current amount of insulation (depth in inches) existing in the attic. Next, determine the amount of insulation needed by estimating the square footage of the attic (multiply length by width). After these measurements have been made, call 1-800-GET-PINK for recommen-

dations on the best product for your insulation project. For attics that are uninsulated, a blanket of R-30 or R-38 may be recommended. For attics with existing insulation, a second layer of R-25 or R-19 will usually bring the attic up to DOE recommendations.

**STEP 2:** To begin, lay a piece of plywood perpendicular to the joists for a work platform. If the current insula-

tion is lower than the top of the attic joists, lay the appropriate thickness of unfaced insulation to fill the cavity. Add an additional layer of PINKPLUS R-25 Fiberglas Insulation perpendicu-

lar to the joists. Begin at the outer edge of the attic space and work toward the center (this will allow more headroom in the center of the attic for whatever

cutting and fitting needs to be done). **STEP 3:** Insulation should extend far enough to cover the exterior walls, but should not block the flow of air from the eave vents. Keep insulation 3 inches away from recessed lighting fixtures, unless the fixture is marked "I.C." (insulated ceiling) — a fixture designed for direct insulation contact. Insulation placed over an unrated fix-

ture, such as a recessed light, may overheat and start a fire.

To locate the home center that stocks PINKPLUS R-25 in your area, call 1-800-GET-PINK. Each caller also receives a free copy of Owens-Corning's 36-page booklet, *A Homeowner's Guide to Insulation and Energy Savings*, which provides information on how and where to insulate your home.

# CARTER

## Lumber EVERYDAY LOW PRICES

GOOD THRU 10/25/94



#298-SS	#296-SX	#284-FL	#236-SX	#237-CF	#239-GB
Vinyl Clear/Wood Core	Vinyl Clear/Wood Core	Alum. Clear/Wood Core	Alum. Clear/Wood Core	Alum. Clear/Wood Core	Alum. Clear/Wood Core
89 <sup>99</sup>	125 <sup>00</sup>	139 <sup>00</sup>	185 <sup>00</sup>	199 <sup>00</sup>	219 <sup>00</sup>

OTHER COLORS IN STOCK. CUSTOM SIZES AVAILABLE.

**STORM DOORS**

1" STOWAWAY SELF STORING **49<sup>99</sup>**

1" OLD TOWNE CROSSBUCK **69<sup>95</sup>**

\*Self storing glass/screen \*White or Brown finish available \*Heavy duty closer

\*White or Brown finish available \*Heavy duty closer

Tempered Safety Glass Hardware & Screen Included

**FIBERGLAS INSULATION**

R-Value 11 Kraft Faced (3 1/2" x 15") **10<sup>89</sup>**

R-Value 19 Kraft Faced (6 1/2" x 15") **9<sup>28</sup>**

R-Value 25 Attic Blanket (8" x 15") **5<sup>24</sup>**

\*Do-it yourself \*Save on fuel bills \*Kraft faced rolls Higher R values mean greater insulating power Ask us for the fact sheet on R values



**40% OFF LIST**

OVER 200 STYLES AVAILABLE

**CELLULOSE INSULATION**

**2<sup>99</sup>**

PER BAG

**MACCO. EXPANDING FOAM SEALANT LIQUID SEAL**

**3<sup>49</sup>**

\*Excellent energy saver \*Fills holes caulkers can't \*Bonds and insulates #LS-605 12 oz.

ACRYLIC CAULK LIQUID SEAL **1<sup>49</sup>**

\*Fast drying acrylic caulk with silicone \*Mildew resistant 10.3 oz #LC 130

100% SILICONE SEALANT **3<sup>49</sup>**

\*Superior quality sealant for use indoors or out \*Available in White Clear Black and Bronze 10.1 oz

0% INTEREST

90 Days Same As Cash

When You Open or Use Your Carter Card On Purchases Of \$200 Or More!

APPLY TODAY FOR YOUR CARTER CREDIT CARD

# CARTER LUMBER

8213 RED ARROW HIGHWAY, BRIDGMAN, MI

2-1/2 MILES NORTH ON RED ARROW OFF I-94 • LUMBER 465-6600

Mon.-Fri. 7:30-6, Sat. 7:30-4, Sun. 9-3




DELIVERY AVAILABLE





Do not allow rubber gloves to remain in cleaning fluid, acid or alkaline solutions longer than half an hour.

# New Carpet Care: Things To Know And Things To Do

Whether you're thinking about carpet as a floorcovering alternative or you've recently had new carpet installed, there are some very important things you need to know and do to protect your new investment.

The result of proper carpet care will be a cleaner indoor environment and carpet that serves you better while adding beauty, warmth and comfort to your home.

Tom Mathis, Peerless Carpet Center Manager, suggests that consumers begin caring for their carpet on the day it's installed by following a useful checklist of things to know and do.

"Carpet care is quick, easy and inexpensive," says Mathis, "especially if you understand the nature of carpet and know how to care for it."

## Carpet Care Checklist

- 1 **Ventilation** It is always a good idea to properly ventilate the room or rooms in which new carpet has been installed. The Carpet and Rug Institute recommends that you allow fresh air to flow (through the use of fans, open windows and open doors) into the room for a minimum of 48-72 hours to effectively remove unwanted odors.
- 2 **Fading** All carpets will slowly lose some color due to natural and artificial forces in the environment. However, fading can be delayed by:
  - regularly vacuuming
  - regularly changing air filters in heating and air conditioning systems
  - reducing sunlight exposure
- 3 **Shedding** Shedding is normal in some new cut pile carpets. Regular vacuuming removes the loose fibers without harming the carpet.
- 4 **Buckling & Puckers** After extended use, a carpet may develop a series of ripples or ridges. There are several potential causes:
  - Dampness after periods of high humidity
  - An underpad that is too thick or too soft, allowing extreme distortion of the carpet under foot
  - Inadequate stretching of the carpet when originally installed
- 5 **Footprints** Most deep pile carpet will show shoe or foot impressions. If you find this objectionable, a carpet of lower pile, lower luster and denser or textured construction will minimize the condition.
- 6 **Shading** This is a normal characteristic of a luxurious, dense, cut pile carpet such as velvets and plushes. The visual effect is caused by the tips of the tufts reflecting differently than the sides of the tufts. It is an aesthetic quality in the design, not a defect.
- 7 **Pile Crushing** Pile becomes crushed or compacted with use. Vacuum against the lay of the tufts with a beater-bar machine or brush with a pile groomer to lift and restore the crushed pile.
- 8 **Dents** Usually caused by furniture or heavy objects, dents can often be corrected. Shift the location of furniture from time to time. Brush the dented area or use a grooming tool to loosen and stand the crushed tufts upward. Holding a steam iron several inches above the carpet surface, steam the dented area lightly and brush the tufts upward with your finger tips (do not let the iron touch the carpet).
- 9 **Sprouts** To remove yarn tufts that stick up higher than the carpet pile, clip off excess length with scissors or fingernail clippers (do not use a knife). Sprouts are not a manufacturing defect.
- 10 **Snags** If tufts are pulled out of the carpet, clip off with scissors — never pull them out. If a long "run" occurs, see your carpet dealer to have the yarn retufted or glued back into place. Snags occur most frequently in loop pile carpets.
- 11 **Burns** Remove the charred tips of burned fibers by cutting with curved fingernail scissors. If the burn spot is deep, it may require professional repair. See your installer or dealer.
- 12 **Static** Most carpets have protection against annoying static shock.

Restretching with a power stretcher by a competent installer should correct this condition.

Look for a permanent built-in anti-shock feature. Other treatments are not permanent and may only control some levels of static electricity. Static electricity is usually

an indication that the humidity level is too low for human health and comfort. The use of a humidifier is recommended. For more information about how to

extend the life of your carpet, call 1 800 845 4252 and request your free copy of the Peerless "Caring for Your Carpet" guide.

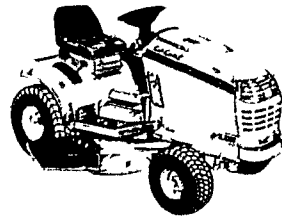
## DID YOU KNOW?

Finished nailers now come equipped with adjustable depth-of-drive control for precise countersync or flush drives.

For more information on air-powered fastening tools, call the SENCO Action Line at 1-800-543-4596.

# Truck Load Sale On 1995 CUB CADET TRACTORS

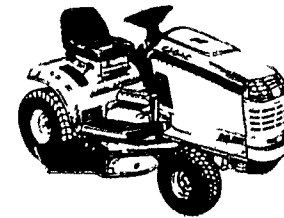
## SERIES 2000 MODEL AGS 2130



12.5 HP Kohler Command OHV Gas Engine  
 6 Speed AutoGear™ Transmission  
 Direct Drive Shaft to Transmission, No Belts  
 Electric PTO  
 Welded, Full Length, Twin Channel Steel Frame  
 Pivoting Cast Iron Front Axle  
 Manual Lift With Spring Assist  
 Standard 38" High Vacuum Deck  
 Quick Frame Attach System  
 Optional Mulching or Bagging  
 Snow Blowers & Snow Blades Optional  
 Available for Series 2000 Tractors

**\$2249<sup>95</sup>**  
 Our Sale Price

## SERIES 2000 MODEL AGS 2140



14 HP Cummings Gas Engine  
 6 Speed AutoGear™ Transmission  
 Direct Drive Shaft to Transmission, No Belts  
 Electric PTO  
 Welded, Full Length, Twin Channel Steel Frame  
 Pivoting Cast Iron Front Axle  
 Manual Lift With Spring Assist  
 Standard 42" High Vacuum Deck  
 Quick Frame Attach System  
 Optional Mulching or Bagging  
 Snow Blowers & Snow Blades Optional  
 Available for Series 2000 Tractors

**\$2599<sup>95</sup>**  
 Our Sale Price

## SERIES 2000 MODEL HDS 2185



18 HP Kohler Command OHV V-Twin Cylinder Engine  
 AutoHydro™ Drive Transmission  
 Direct Drive Shaft to Transmission, No Belts  
 Electric PTO  
 Welded, Full Length, Twin Channel Steel Frame  
 Pivoting Cast Iron Front Axle  
 Manual Lift With Spring Assist  
 Quick Frame Attach System  
 Optional Mulching or Bagging Attachments Available With Certain Decks  
 Including 48" High Speed Mowing Deck  
 Snow Blowers & Snow Blades Optional  
 Available for Series 2000 Tractors

**\$3999<sup>95</sup>**  
 Our Sale Price

Walk Behind Snow Blowers Are Now In Stock, Hurry In And Lay Yours Away Or Pick It Up Now While Their On The Pre-Season Sale Pricing. Buy Now And Pay Later To Qualified Buyers.

## MID COUNTY LAWN & GARDEN

3959 S. M-139 • ST. JOSEPH, MI 49085

HOURS: M-F 9:00-5:30 SAT 9:00-1:00

1-800-570-7550 429-7500

QUALITY IS THE DRIVING FORCE.





4

FLOORS OF FINE FURNITURE AND CARPETING

Plus Draperies, Floor Coverings, Bedding and Wallpaper.

MOHAWK CARPET SALE-NOW!

30-60-90 DAYS SAME AS CASH

1 MILE SOUTH OF WARREN DUNES STATE PARK ON RED ARROW HWY.

The Dunes Furniture Co.

SAWYER, MICH. • PH. 426-4804

# AAA Michigan has keys to cold-weather starts

Learning the right way to start a car and how to protect a vehicle against winter freeze-ups can help ensure a quick start on cold mornings, AAA Michigan advises.

Most cars more than 10 years old have a carburetor, while many newer cars are equipped with electronic fuel injection.

Determining which type of system a car has is crucial to successful starts. The information can be found in the vehicle owner's manual.

"In general, carbureted cars respond best to a single press on the accelerator pedal," said AAA Michigan Automotive Services Director Gerald Gutowski. "This sets the choke allowing gasoline to vaporize in the carburetor."

"On fuel injected cars, it typically is unnecessary to press the accelerator since an electronic fuel pump will automatically dispense aspirated gasoline," he said.

AAA Michigan recommends that motorists take the following steps to get their cars and their commuting smoothly underway:

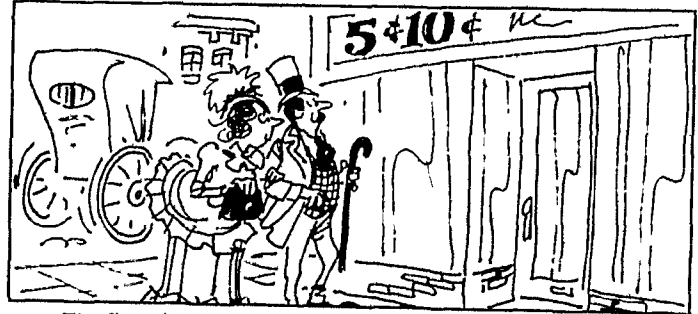
- A good battery is a must for cold winter mornings, especially if a car has remained idle at sub-zero temperatures.
- Park your vehicle in a garage. Motorists without garages should park with the front of the car out of the wind.
- Fill the gas tank to avoid fuel-line freeze. Use of a gas anti-freeze additive will also help prevent fuel-line freeze.
- Before starting the car, turn off all electrical accessories.
- Don't pump the gas pedal in fuel-injected vehicles. Simply turn the key and release when the engine starts. Always consult the owner's manual for recommended procedures.

ed procedures

- For engines with carburetors, press the gas pedal to the floor, release it and turn the ignition. Don't grind the starter for more than 15 seconds. Wait 30 seconds before another attempt. If you smell gas, the engine is probably flooded. Turn off the ignition, wait one minute, depress the gas pedal to the floor and try the key

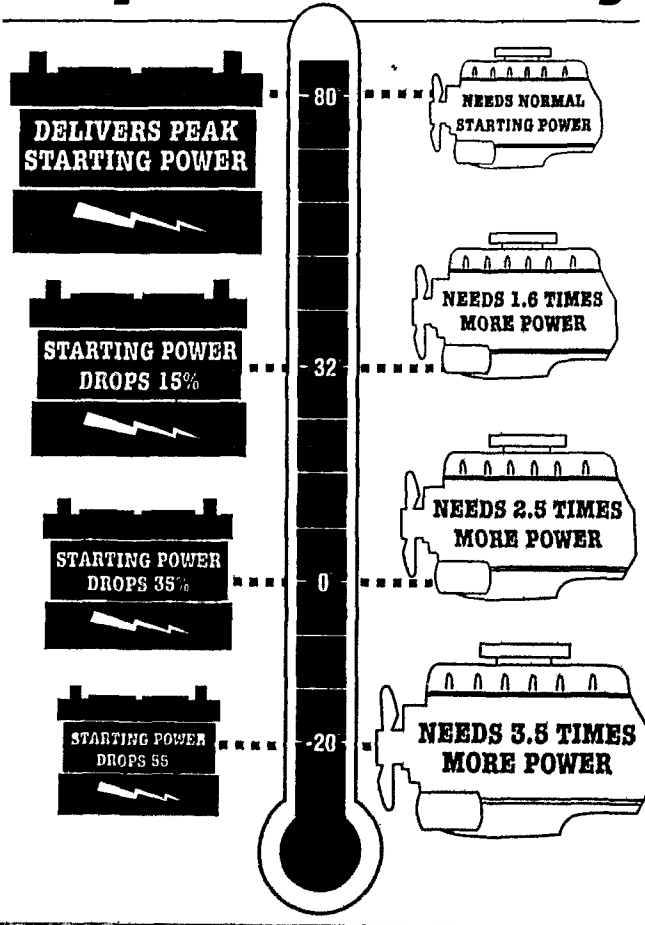
again

- Once the engine is running, warm it up for a few minutes, but not too long. Idling an engine wastes gas. When warming your engine, turn on your heater and defroster to prevent sudden fogging.
- Difficult starting conditions may warrant the use of a block heater, electronically heated dipstick or "trouble light" under the hood.



The first five and ten cent store was established in 1879

## Car's Battery Power Drops With Mercury



IN GOD WE TRUST, ALL OTHERS PAY CASH



Our national motto, "In God We Trust," probably originated from verse 4 of the Star Spangled Banner—"And this be our motto: 'In God is our trust.'"

**Fall Special**  
**BATTERY BOB'S** 684-8080

**72 MONTH BATTERY**  
 900 COLD CRANKING \$58.95 EXCHANGE  
 FREE IMMEDIATE INSTALLATION

ALSO BATTERIES FOR:

- CAMCORDER
- CORDLESS PHONES

SEE US AT THE K-MART TRAFFIC LIGHT IN NILES, MI

WE RENT RYDER TRUCKS  
 684-8080



**RYDER**

# WE DO AWNINGS

**Big Awnings**

**FAT AWNINGS**

ALUMINUM AWNINGS

Back-Lit Awnings

Vinyl Awnings

Little Awnings

SKINNY AWNINGS

Fiberglass Awnings

Old Fashion Awnings

Canvas Awnings

• CUSTOM DESIGN • FREE ESTIMATES  
 • LICENSED CONTRACTOR • LEASING AND FINANCING PLANS AVAILABLE

WE DO THEM ALL  
 Call the Awning Professional  
 for Quality Service & Fair Prices

*Artistic Design Concepts*

Phone: Benton Harbor...927-8288

Eau Claire.....944-5881

## Getting Home Repairs Under Control

Many homeowners find home repair to be difficult work. Yet for some the job is even harder because they can't decide what needs to be done or where to begin. How can you fix a chronically wet basement, for example, if you don't know where or how the water is coming in?

A professional home inspector may be able to give you the answer. Like a doctor who uses various symptoms to diagnose an illness, a home inspector evaluates all the clues in your home to provide an objective evaluation about the repairs that need to be done. Yet unlike a repair contractor who also hopes to get your business, a home inspector who abides by the professional standards of the American Society of Home Inspectors cannot bid

on doing the repairs and has no vested interest in creating unnecessary work.

There are many types of house problems that home inspectors can help manage, ranging from roof leaks to basement leaks, from inefficient heating systems to inadequate electrical systems, even energy conservation. It is interesting to note that in a survey of its Members, ASHI found that four of the top ten problems most commonly found are directly related to the damaging effects of water.

1. Improper surface grading and drainage was reported as the most frequently found problem, and is responsible for the most common of household maladies: water penetration of the basement or crawlspace.

2. Roof leakage, reported by survey participants as the second most common problem, is usually caused by old or damaged shingles or improper flashing, and leads to cosmetic and, sometimes, structural damage.

3. Plumbing problems, such as old or incompatible piping materials, faulty fixtures, and improperly vented waste lines, can cause considerable interior damage if not corrected.

4. Exterior flaws in a home's windows, doors, and wall surfaces are often responsible for water and air penetration, and usually can be remedied with proper caulking and weather-stripping.

Other problems which home inspectors frequently find are:

1. Improper electrical wiring, which includes situations such as insufficient electrical service to the house, inadequate overload protection, and amateur, often dangerous, wiring connections;

2. Heating system problems, such as broken or malfunctioning operation controls, blocked chimneys, and unsafe exhaust disposal;

3. Poor overall maintenance, demonstrated for example by cracked, peeling, or dirty painted surfaces, crumbling masonry, makeshift wiring or plumbing, and broken fixtures or appliances;

4. Structural problems involving foundation walls, floor joists, rafters, and window and door headers;

5. Poor ventilation, caused by over-sealing the home, which results in excessive interior moisture and the rotting or premature failure of both structural and non-structural components.

Homeowners who feel overwhelmed or insufficiently experienced to evaluate their home's maintenance and repair priorities might consider getting some impartial, expert advice from a professional home inspector. To find a qualified and reliable inspector, look for a Certified Member of the

American Society of Home Inspectors, the leading professional association that sets qualification and performance standards for the profession. You can find a local ASHI member by writing to ASHI at 85 West Algonquin Road, Suite 360, Arlington Heights, IL 60005, or calling 800 743 2744.

## Tax Deductions Available For Natural Gas Vehicles

Federal tax deductions of up to \$2,000 are available for cars, vans and pick-up trucks that operate on natural gas, according to the American Gas Association.

Tax deductions of up to \$5,000 are also available for vehicles over 10,000 pounds and even greater deductions apply to large trucks, buses and fleet refueling equipment.

These tax deductions, combined with a national average natural gas fuel cost of about \$ 70 per gallon equivalent, make natural gas vehicles an attractive alternative to gasoline and diesel-powered vehicles, A G A says.

In addition to lower fuel costs, natural gas is cleaner burning than gasoline, diesel and other alternative fuels, A G A says.

When used as a transportation fuel, natural gas reduces carbon monoxide emissions by up to 90 percent, smog-producing hydrocarbons by up to 85 percent and carbon dioxide emissions



by approximately 30 percent, compared with gasoline, A G A says. More than 800 natural gas filling stations are operating in the United States, serving about 30,000 natural gas-powered vehicles.

## All Furnaces Need Check-ups

All heating systems should be serviced periodically by a qualified contractor to ensure top performance, according to the American Gas Association. Such maintenance will ensure safe and efficient operation.

Heating contractors should follow the manufacturer's maintenance guidelines for each unit in accordance with local building codes and regulations, A G A says.

- The check-up should include:
- inspection of the furnace vent system,
  - removal of any leaves, nests or other obstructions from inside the chimney,
  - replacement or cleaning of the air filter,
  - lubrication of the blower motor,
  - replacement of blower belts, if needed,
  - cleaning of pilots and burner chamber,
  - removal of dust and lint from furnace vents, registers and baseboard heaters, and
  - cleaning and adjusting of thermostats.

### AUTO-TECH

*"Your Servant in Car Service"*

Your "get ready for winter" auto check-list:

- Battery and charging system
- Antifreeze and heater
- Tune-up and oil change
- Brakes
- Electrical Diagnostic
- Engine Repair

We have the latest equipment to service your computerized automobile.

708 S. Red Bud Trail, Buchanan  
695-7444

### THINGS TO DO BEFORE THE SNOW FLIES...

- Plant grass seed • Fertilize your lawn
- Stock up on bird feed • Worm your pets
- Protect your buildings from mice

Supplies available at...

**Buchanan Feed Mill**  
Railroad Street, Buchanan  
695-3391

Purina Mills, Inc. a trademark of Purina Mills Company

## Jack's

### TRAILER SALES & RENTAL

**Rentals—Mini M.H.—Tent Campers**

• Let Us Sell Your R.V. on Consignment

- Service on All Makes
- R.V. Parts & Accessories (Complete Line)
- Welding
- Bottled Gas
- Boat Trailers
- Utility Trailers
- Hitches Installed (All Classes)
- Repair All Types, General & Rewiring

• We Carry Moving Supplies, Boxes, Tape, Etc

### MOTOR HOME RENTALS

**CHECK OUR WINTER RENTAL PRICES**

LET US WINTERIZE YOUR RECREATIONAL VEHICLE  
RV ANTIFREEZE IN STOCK NOW

51370 US 33 North  
So. Bend, IN (219) 272-1669 *"We Rent Ryder Trucks"*

## \$49<sup>00</sup>\*

PER RESIDENTIAL FURNACE  
\*C.O.D. ONLY

### FURNACE CLEAN AND CHECK

#### NATURAL GAS & PROPANE

- Increase System Efficiency
- Helps to Lower Operating Cost
- Reduces Maintenance Cost

Call for our low price on oil furnace clean & check!

FREE Carbon Monoxide detector with coupon

- Does not apply to emergency or no-heat calls
- Replacement parts and labor to install are extra
- Regularly \$59.00
- Comparable C.O.D. discounts available for commercial applications.

Please Present This Coupon For Discount

## Thornton

### Electric & Heating

Niles 683-4300 Dowagiac 782-6779 South Bend 271-0041

FAST SERVICE to Granger & Clay Townships  
LICENSED & INSURED in Michigan & Indiana

## Get Appliances Ready for Winter

The summer's over, school is starting and it's time to close the summer house. You've stashed the beach chairs and emptied the cupboards, but did you get your appliances ready for winter? According to Maytag, preparing water-using appliances for storage is especially important if they will be subjected to temperatures below freezing.

"Clothes washers, dishwashers and refrigerators can be damaged if water is not removed from hoses and internal parts," says Julie Bundy, Maytag's manager of consumer education. The same applies to above-freezing storage and long periods of non-use, such as vacations.

Starting with the clothes washer, fill it with warm or hot water, add a cup of bleach or white vinegar, and run it on "Regular" — without clothes — through a complete cycle. Then, disconnect the washer from the electrical supply — that's important! — locate the drain hose (consult installation guide) and remove all excess water.

Give the dishwasher a similar treatment. Selecting a short wash cycle, use one of the following methods: Fill both sides of the detergent cup with automatic dishwasher detergent or baking soda, or add one cup of bleach to the

bottom of the tub after water has filled in, or run the dishwasher for a complete cycle, then carefully clean the door gasket with baking soda and water. Next, turn off the water supply and set the dishwasher to drain, following manufacturer's instructions. Run the drain portion of the cycle twice to remove all water. Shut off the power, disconnect from the electrical supply and prop open the door.

Before closing down the refrigerator, remove all food. Start by turning off the ice maker/dispenser by raising the wire arm. Turn off the water supply line to the water valve, place a pitcher under the dispenser, and drain the holding tank and plastic tubing. Next, disconnect the refrigerator from its electrical outlet and clean thoroughly, including the drain pan behind the toe plate. Use a mild detergent or two tablespoons of baking soda per quart of warm water. Let glass shelves warm to room temperature before cleaning. Dry the interior and prop the doors open to prevent odors.

After a long storage period, expose water-using appliances to above-freezing temperatures before using. This guarantees that any residual water in internal parts is thawed.

Come springtime, if you have any

problems starting up your appliances, make sure they are plugged in before calling a repairman. It's estimated that between 10 percent to 15 percent of all service calls could be avoided if people

would follow a simple checklist. "Before You Call," a handy 13-page guide to major appliance servicing, will tell you how to eliminate unnecessary calls and where to find

good service when you really need it. To obtain a copy, send 50 cents to Maytag, Dept. 206YG, Newton, IA 50208. FH944083



Nearly half of the population of the U.S. moved from one home to another from 1985 to 1989, according to a Census Bureau report.

### DRAPERIES ON WHEELS



**50% off**

- Pleated Shades
- Verticals
- Mini & Micro Blinds

**35% off**

Draperies and Bed Spreads

- Consultation
- Installation

**Free**

We keep our overhead the lowest(!)  
So you save the most!

468-4551

Serving You Since 1985



## CARPET SALE



VISA MASTERCARD DISCOVER

### ERHARD & Carpet

6681 U. S. 31 North, Berrien Springs • 429-6444  
5 Miles South of I-94, on U.S. -31, (1/4 Miles South of Rocky Weed Rd.)

Carpet your home with the latest textured styles

Starting at **\$6.95** Sq Yd

Open Mon -Thurs 10-8,  
Fri 10-4,  
Closed Sat, Sun. 10-5

## Let LaSalle Federal help you make your house into a dream home.



As the winter season once again approaches, time is running out for making those necessary home improvements. But with a loan from LaSalle Federal Savings Bank, you could be on your way to the home you've been dreaming about.

Our fixed-rate, fixed-term home improvement loan lets you make major improvements while giving you up to 10 years to pay. A second option is LaSalle Federal's home equity loan, which allows the equity you've already built in your present home to work for you.

You can even refinance your current mortgage with an appraised value, which includes your planned improvements.

With LaSalle Federal Savings Bank, we'll help you explore your options and give you the friendly, knowledgeable advice you need. Call LaSalle Federal today and find out how we can solve your home improvement problems.

### LaSalle Federal Savings Bank

Buchanan	(616) 695-3884
Bridgman	(616) 465-5500
Coloma	(616) 468-6741
Decatur	(616) 423-7081
Mishawaka	(219) 259-9119
Niles	(616) 684-7780
St. Joseph	(616) 982-4175



## FIX IT THIS FALL

INSULATION  
WEATHERSTRIPPING  
CAULKING PAINT  
STORM DOORS

See Us For All Your Fix-Up Needs

### COONEY'S

Hardware and Lumber  
5896 Sawyer Rd., Sawyer

Mon. thru Fri. 8-5 • Sat. 9-3  
426-4405



# Eight Cold-Weather Car Care Checks

Record-breaking winter temperatures can leave you with enough car repairs to break your bank account. That's why it's no time to let simple, preventive car maintenance procedures fly south with the birds. Consider these tips for a smooth ride this winter.

**Shocks and Struts** — Alternate freezing and thawing can produce hazardous driving conditions — such as potholes. Even the most precise drivers can barely escape a whole winter without a single damaged tire or broken spring, but sometimes the jolt from the one you couldn't dodge can be very expensive. The loss of a muffler and sometimes the pipes that go with it can be prevented by regularly inspecting the undercarriage. If you survive a pothole, let an expert do an alignment check to assess any damage that may have occurred to shock absorbers, struts and other suspension parts.

**Tires** — When outside temperatures begin to drop, tires should be checked at least once a month, since cold weather reduces your tire's inflation pressure. Driving underinflated tires causes tire tread to wear faster and unevenly, and it can reduce ride performance, affect vehicle handling and decrease your vehicle's fuel efficiency.

Another good habit to continue throughout the season is to check your tires for uneven wear patterns. Uneven wear may signal improper inflation pressure, misalignment, tire and wheel imbalance or suspension problems.

If your vehicle becomes stuck on ice, you should avoid spinning the tires, as the force created from this action can literally rip tires apart.

**Brakes** — Don't gamble with your brakes, they could save your life. Your braking system, probably the most critical safety system on your car, should be checked periodically this winter. It'll be like buying yourself some peace of mind!

**Engine** — A severe winter could mean millions of cars failing to start. Excessive exhaust emissions and a polluted atmosphere can dull a picturesque snowfall, and misfiring, knocking and pinging is never pretty. Before a "no-start" ruins your day, start out this fall with a well-tuned car.

**Oil** — Change your engine oil and

## Revved Up and Ready to Go



Don't let simple, preventive car maintenance procedures fly south with the birds this winter. Get your vehicle off to a road-ready start by bringing it to a certified mechanic for a seasonal inspection. This way, he can troubleshoot problems before you end up stranded. A proper tune-up will ensure that the engine is revved up for cold-weather starts. And if you're doing lots of stop-and-go or long-distance driving, have the oil changed about every 3,000 miles (or as specified in your owner's manual).

FC944818

filter every 3,000 miles (or as specified in your owner's manual) if you do lots of stop-and-go driving, carry heavy loads or drive long distances this fall and winter.

**Belts and Hoses** — When one needs replacing, you're likely to find more in marginal condition. Rubber components under the hood exist in a hostile environment, surviving sub-zero temperatures in the winter.

Hoses circulate as much as 7,500 gallons of coolant per hour at up to 18 pounds of pressure — and warrant periodic attention. Failure to maintain your cooling system by flushing and

refilling every 24 months with fresh antifreeze can cause freeze-up, overheating and rust and corrosion buildup.

**Batteries** — Batteries lose their charge over time, especially in cold weather, and cable connections can corrode. A certified technician can test the strength of your battery's charge.

**Paint Job** — Don't ignore bumps, scrapes, scratches and dings this fall. As winter sub-zero freezes set in, the damage is likely to get worse as rusting sets in.

Don't delay! Fall's already here and winter's on its way!

FC944792

**SALES • INSTALLATION**  
**• FAST RADIO DISPATCHED SERVICE**

**GAS & OIL FURNACES • CENTRAL AIR**  
**CONDITIONING • HUMIDIFIERS • ELECTRIC &**  
**GAS BOILERS • ELECTRONIC AIR CLEANERS •**  
**HEAT PUMPS**

Over 30 Years Experience • Michigan License # 37659

**WE SERVICE MOST MAJOR BRANDS**

**Garwood**  
**HEATING & AIR CONDITIONING**

**684-8778**

2207 East US 12 • Niles

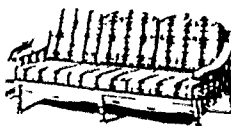
Mon-Fri 8AM-5PM

Sat by Appointment

Financing Available

*Denise's Professional Upholstery*

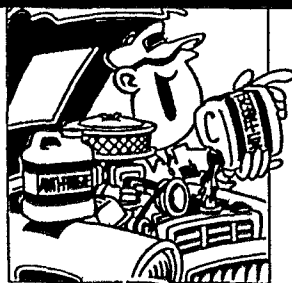
• Home • Office  
• Boat • RV's



**Downtown Baroda**

**• 422-2240 •**

T-W-Th 9-5, M & F by appointment



**D & S**

**Get Ready For**  
**WINTER**

With a Winterization Check Up

At....

**AUTO REPAIR**

Full service repairs on all makes

12 years experience

No Appointment Necessary

125 Main Street

Buchanan 695-2906

Mon.-Thurs. 8-2 ; Fri. 8-12:30 ; Sat. 8-5

**\$19<sup>99</sup>**

PARTS ADDITIONAL

**SPECIAL OFFER**

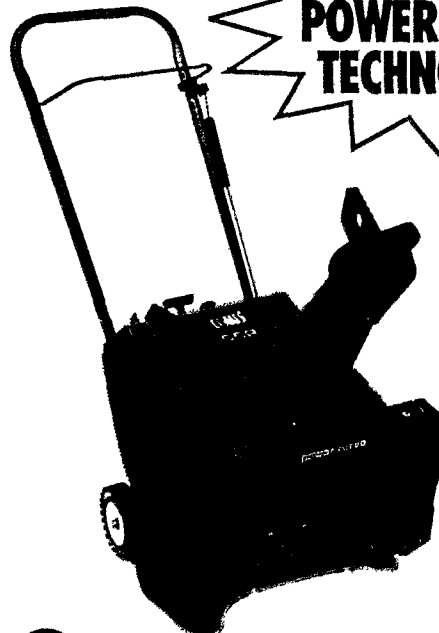
**CHECK & REPLACE ALL**  
**FLUIDS • BELTS • HOSES**

**\$19<sup>99</sup>**

PARTS ADDITIONAL

**GIVE SHOVELING A**  
**WINTER VACATION.**

**EXCLUSIVE**  
**POWER CURVE**  
**TECHNOLOGY**



**TORO® CCR 1000™**  
**SNOWTHROWER**

- 3 hp engine
- 20" clearing width
- Throws snow up to 20 feet
- Self-propelling action for easy handling
- Two-Year Total Coverage Guarantee\*

**Gambles** **The Friendly Ones**

266 E Front St. Buchanan MI • 695 6491

Open Sunday 10 am - 2 pm

**When you want it done right.**

**TORO**

## Strong Color, Graphic Design Add Zest to Dull Bedrooms

Who said that bedrooms should be quiet and serene? That can be a prescription for utter boredom. Many of today's leading designers, aware that so much varied living often goes on in the bedroom, are advocating the opposite. Make it a lively room in which you will want to spend time.

Moreover, there's nothing to say that

you can't have frills, especially if it's going to also be an all-purpose room for possibly a home office, TV viewing, exercise arena or whatever.

A great decorating choice for those who have a taste for informal styles would be this bright, cheery ensemble with its highly graphic combination of patterns. "Bed and Breakfast" is guar-

anteed to add punch to any bedroom.

From Cameo, a CHF Company, it combines a traditional large-scale multicolor rose motif in a very current palette with a broad green and white awning stripe. If you want a really complete room decor, it comes in bedding, window treatments and accessories, as well as correlating casual fur-

niture covers from Cameo's new Stylesetter collections. With this style, your bedroom won't have to take a

back seat to the rest of the house.

For information on retail outlets, call (212) 679 3040.

## Ceramic Tile Installation

Installing ceramic tile is a popular means of upgrading the style and value of a home, and there are numerous "how-to" references for the do-it-yourselfer. Along with several books, The Home Depot offers the video, "U-Tile It Yourself," and a free in-store class. Below are some basic guidelines. Your tile dealer can provide more technical advice.

Basic materials and tools include tiles, tile spacers, thin-set adhesive, grout, notched trowel, tile cutter, nippers, squeegee, level, tape rule, chalk line, straight edge and square, putty knife, tile sealer, sponge and cleaning rags.

Measure area to be tiled and calculate the number of tiles needed. Don't

force spacing between tiles.

Determine backing surface. Concrete, "Wonder Board" (for high humidity areas such as showers), or exterior plywood are best choices.

Thoroughly clean and dry tiling areas. Divide area into quadrants with chalk line.

Test tile design. Lay tiles and spacers out dry. Start at center and cover one quadrant at a time.

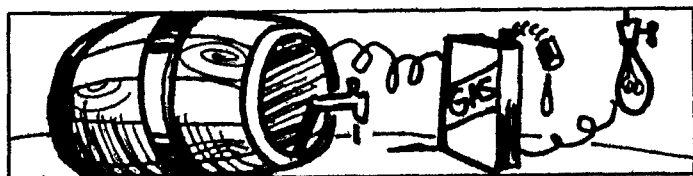
Spread adhesive over small area at a time so it won't dry before tiles are set. With slight, twisting motion, press each tile firmly into place. Stand spacers on end between

tiles. Check accuracy with straight edge and square.

Leave small spaces at edges for cut tiles. Wear safety glasses when using tile cutter. To cut irregular pieces, use tile nippers. Let tile stand for 24 hours. Remove spacers and clean away any debris.

Using squeegee, apply grout diagonally across tiles two or three times. When grout becomes firm, wipe away excess. Reclean surface and polish with dry cloth.

Allow grout to "cure" up to seven days. Then wash surface, polish and add sealer. When dry, buff tile to restore bright luster.



Over the decade from 1981 to 1991, petroleum was the world's most heavily used type of energy; during that time, production increased by nearly six million barrels per day.

### A-1 MOBILE ROOF SYSTEM

Cadillac, Michigan



- White enameled aluminum stops any and all leaks for the full life of your mobile - guaranteed!
- Thick layer of foam insulation drastically reduces summer heat - drastically reduces winter heating bills. Cuts roof noise.
- Over-hang at eaves eliminates stains and streaking. No more coating and caulking.

### START to FINISH

We MANUFACTURE your roof

We INSTALL your roof

We can arrange your FINANCING

A-1 can not be beaten on PRICE or QUALITY

12X80 INSTALLED 14X70

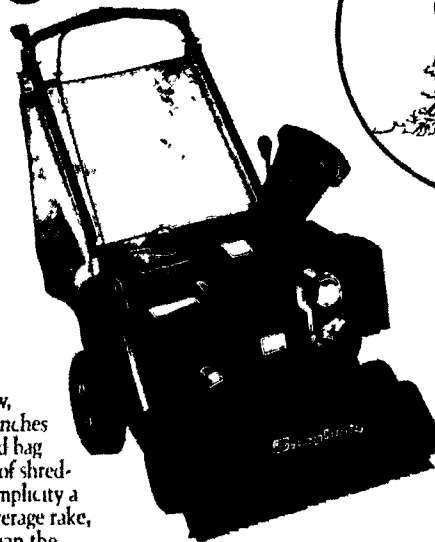
\$1870<sup>00</sup> .024 GAUGE \$2460<sup>00</sup>

GET YOUR FREE ESTIMATE TODAY!  
BANK FINANCING AVAILABLE!

1-800-872-2089

Open House • October 21, 22

# Clearly better clearing leaves.



As you discover the benefits of a chipper vacuum, you'll discover the added benefits of a Simplicity Chipper Vacuum. Like its wide 25" vacuum, its adjustable air flow, its ability to chip and bag branches up to 3", and its large zippered bag that holds up to four bushels of shredded leaves. So not only is Simplicity a better alternative than the average rake, it's also a better alternative than the average chipper vacuum.



**Simplicity**  
Outdoor Power  
Equipment

Innovation brought  
down to earth

"The Store That Service Built"

SALES

SERVICE

## Strieter's Inc.

1333 St. Rd. 2 West

219-362-3775



## Come Home for the Holidays TO YOUR NEW MANUFACTURED HOME!!

Place your home in one of the many  
manufactured home communities  
in our area or on your own property.

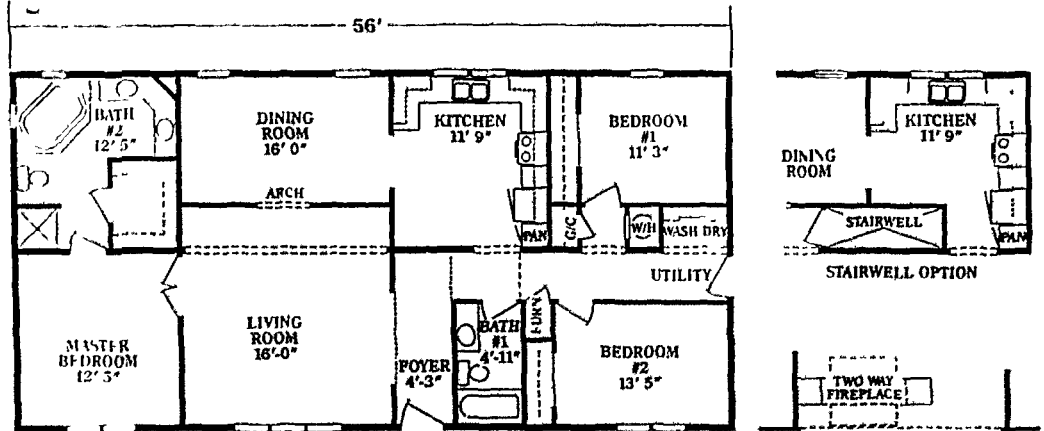
This Home Can Be Yours For As Little As

**\$425.22\*** per month

### 3 BEDROOMS, 2 BATHS

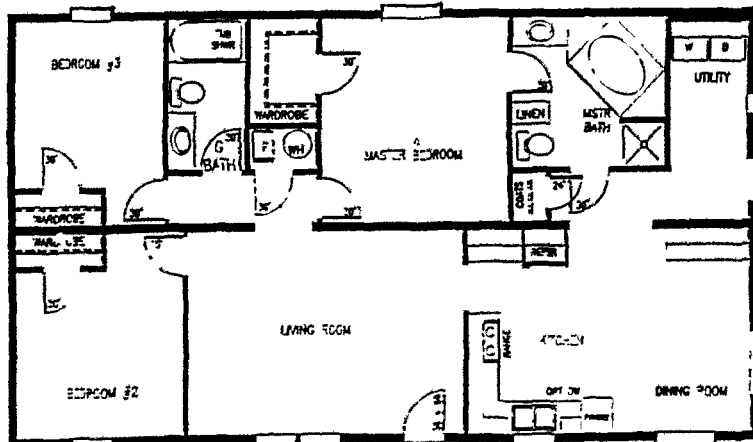
Features: All drywall; 8' ceilings; 4/12 residential pitch roof; double fireplace; designer tub in master bath and much, much more.

\*10% down @9.25% for 20 years.



MODEL #4803 60 56x28 Approximately 1530 Sq Ft.

OPTIONAL BOOK SHELVES / TWO-WAY FIREPLACE



1248 Sq. Ft.

You Can Own This Home For As Little

**\$286.29\*** per month

### 3 BEDROOMS, 2 BATHS

Options: Skylights; oak cabinets; designer tub; beautiful eat-in kitchen; and many more features.

\*10% down @9.25% for 20 years.

*Become part of our community ~ Three Oaks*

**INTRODUCING 15 NEW & AFFORDABLE HOMESITES**  
JOINING 42 OTHER PHASES

**PLUS, CONVENIENT ACCESS TO CHURCHES, ALL SERVICES & GOVERNMENT OFFICES!**

OAKVIEW ESTATES

**ARRIVING IN NOVEMBER!**

Free Lot Rent For 6 Months

MODEL #5102 70-66x14 Approx. 924 sq ft

**AS LOW AS \$194.31 PER MONTH\***

A great starter home! Why rent when you can own a 3 bedroom, 924 square foot home?  
Other models available to fit any budget.

\*9.28% APR for 15 years. 10% down

**AND MAKE PLANS TO SPEND THE HOLIDAYS IN YOUR NEW HOME!**

**OAKVIEW ESTATES**  
Manufactured Home Sales

Oakview Estates  
6992 U.S. 12 West  
Three Oaks, MI  
616/756-9447

Warren Dunes  
11159 Red Arrow Hwy.  
Lot #158  
Bridgman, MI  
616/465-4067